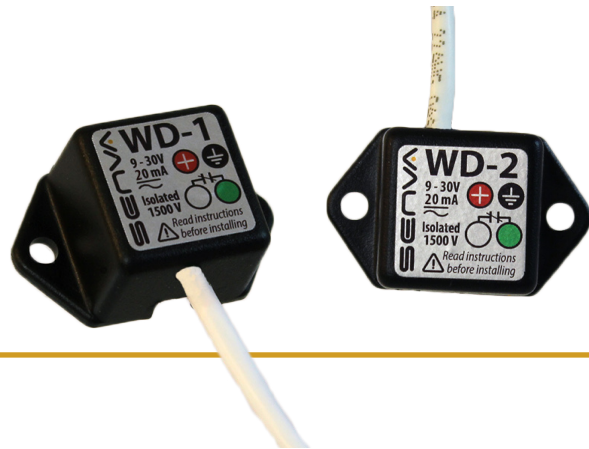


## WD Surface mount Water Detectors

Soild state  
Gold plated sensing electrodes  
Floor and wall mount options



### DESCRIPTION

The WD series detects water to prevent costly damage. Unlike float systems, it utilizes solid state detection, so is not prone to mechanical failure. The WD-1 is designed for mounting on the floor, drip pans or condensate pans, as the gold plated sensing electrodes face downwards out the back of the enclosure. The WD-2 housing accomodates mounting to a wall or vertical surface, with the gold plated sensing electrodes angled to the bottom of the enclosure.

### APPLICATIONS

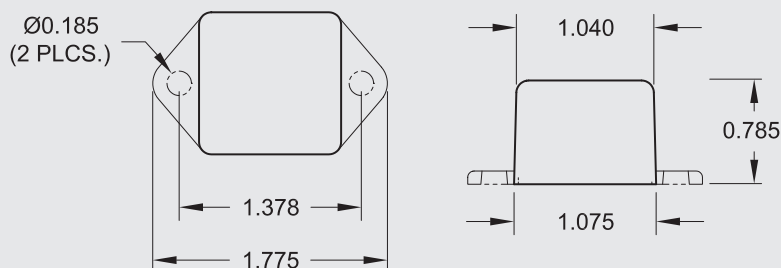
- Ideal for spot leak detection
- Computer rooms, critical equipment, restrooms or commercial kitchens
- Monitor condensate pans and drains—turn off equipment when pans reach limit

### FEATURES

#### Reliable water detection

- Simple installation—screw or ram-set to surface
- Simple operation—no maintenance
- Solid-state design... no moving parts to fail
- Fully potted for water-proofing... maximum durability

#### Dimensions



### ORDERING

<b>WD-1</b>	Floor Mount Water Detector, 9-30 VAC/DC
<b>WD-2</b>	Wall Mount Water Detector, 9-30VAC/DC

### SPECIFICATIONS

Power Supply	9-30VAC/DC, 20mA Max.
Output	N.C. (Form B) Solid State Relay, Isolated
Output Rating	30VAC/DC, 0.1A (100mA) Max.
Sensing	Gold plated electrodes
Operating Environment	-20 to 80°C

